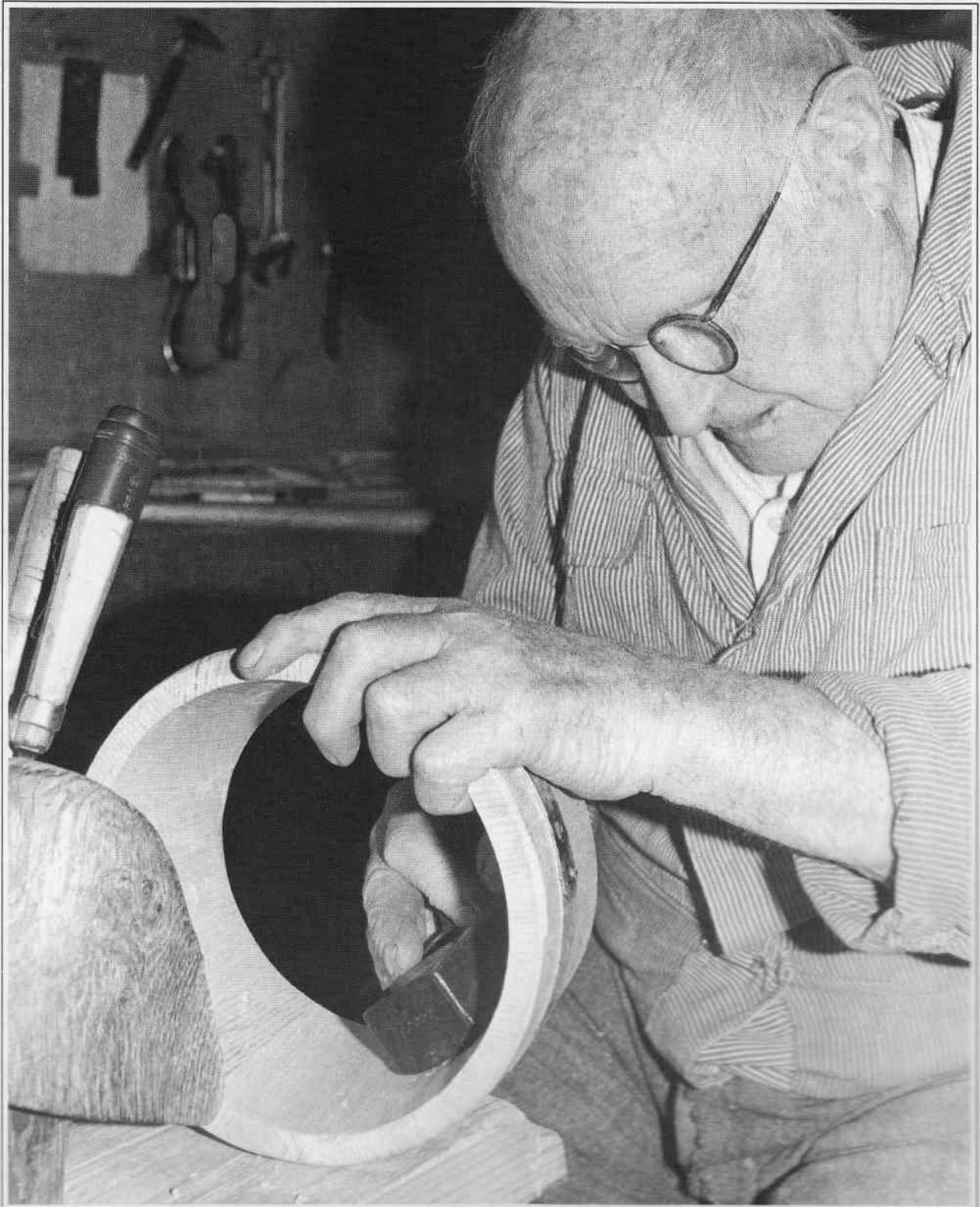


Fine Woodworking

MAY/JUNE 1983, NO. 40, \$3.00
INDEX TO ISSUES 31 THROUGH 39



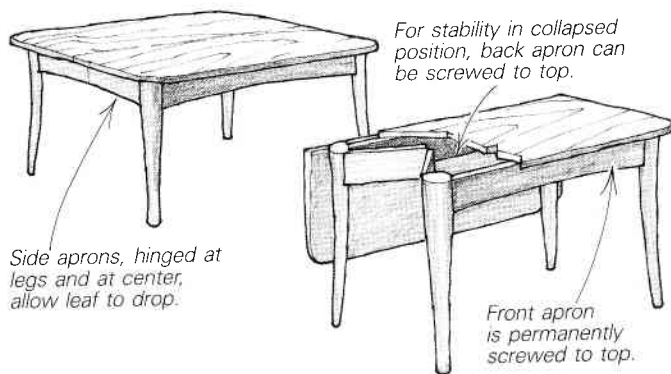
Cooperage

lars for sandwiching the work. To rout the dovetail, I clamp the work in the jig flush with the top of the platform. Two fences, attached at the proper spacing, guide the router and ensure a consistent dovetail. —Victor Gaines, Glenside, Pa.

Table design converts to desk

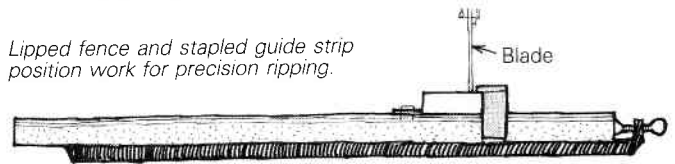
This table design folds in to convert to a more compact side-table or a desk. It has been quite convenient during my frequent Navy transfers, where my furniture has had to adapt to various household settings.

The two table sections are fastened together at the center by a piano hinge. The front section of the top is permanently attached to the apron along the front edge. The two side aprons are hinged to fold in, allowing the rear legs to move forward. At its folded-in position, the rear apron can be screwed to the tabletop for stability. The entire conversion takes just a few minutes. —Andrew J. Pitts, Orlando, Fla.



Safe ripping on the radial-arm saw

Lipped fence and stapled guide strip position work for precision ripping.



While building an architectural model requiring extremely small pieces, I discovered this safe, accurate way to rip short or small stock on my radial-arm saw.

The key is a substitute rip fence with a built-in hold-down lip made from 3/8-in. thick pine. I made several of the hold-down fences to cover a range of stock thicknesses. With the workpiece in position, clamp the fence in its channel so that the lip applies downward pressure. To keep the workpiece against the fence, I staple a scrap of pine to the table along the outboard side of the workpiece. These staples should be methodically pulled and tossed in the garbage when you change hold-ins, to eliminate the possibility of stray metal on the saw deck.

The method holds the wood securely so that it doesn't become a workshop missile, and provides extremely accurate pieces of short, thin stock.

—Ross Asselstine, Minneapolis, Minn.

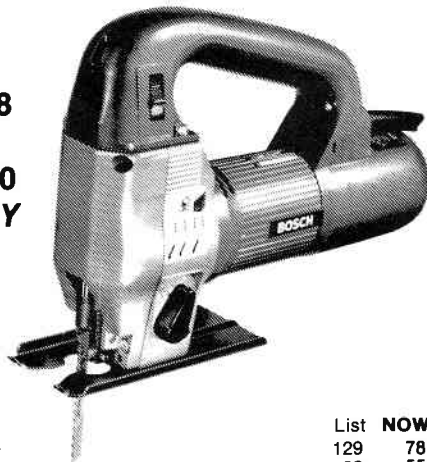
Molding head or shaper hold-in

I wouldn't use this gadget for ripping, because it would tend to close the kerf, but it's a solution to the problem of holding the feedstock against the fence on a shaper, or when using a molding head on the tablesaw. Start with a 1 1/2-in. square

Schlosser Tool and Machinery Co.

301 Bryant Denver, Colo. 80219 303-922-8244

**Bosch 1578
Jig Saw,
List \$219.00
NOW ONLY
\$129.00**



Bosch
90099 1 H.P. Router
1158 VSR 3/8" Drill

List	NOW
129	78
82	55

Rockwell
28-243 14" Bandsaw complete with stand and 1/2 H.P. Motor
31-352 1x42 Belt Sander/Grinder

646	399
227	159

Hitachi
DTC-10 Cordless two speed drill
F1000A Jointer/Planer
TR-12 Plunge Router
F20A 3" Plane

137	72
1999	1425
299	205
139	89

Porter-Cable
505 Sander 1/2 Sheet
330 Sander 3/4 Sheet

145	99
85	59

Please send Check, Money Order, Visa or MasterCard.

Please include \$3.00 per tool shipping and handling except on 28-243, 31-352, and F1000A. CALL for shipping costs on these three items.

We stock a complete line of portable and stationary tools, including accessories. Call us for any of your woodworking needs.

Limited to Quantities in Stock

Let us help you "Finish off" your project with these Porter-Cable None Finer Specials



#330 Speed-Bloc

Palm Grip • One Hand Use • Flush Sanding
All 4 Sides • Direct Drive • All Ball Bearing
• Double Insulated

Mfg. List Price \$85.50

SPECIAL \$59.00 ppd.



#505 H.D. Finishing Sander

Full Grip Top-side Handle with Front Handle for Positive Control • Fast • Less Fatigue

Mfg. List Pr. \$145.00

SPECIAL 99.00 ppd.



#360 Belt Sander

As Illustrated • Dustless • Popular 3 x 24 Size • Ball & Needle Bearing Construction • Perfect Balance

Mfg. List Pr. \$269.00

SPECIAL \$175.00 ppd.

#362 Not Illustrated • Same Features 4 x 24 Size

Mfg. List Pr. \$284.00 **SPECIAL \$195.00 ppd.**

#337 Not Illustrated • Same Features 3 x 21 Size

Mfg. List Pr. \$174.00 **SPECIAL \$115.00 ppd.**

Check Our Abrasive Prices • Belts • Sheets • Discs

Order Now! Receive FREE Router Bit Wall Chart—While They Last

Est. 1927

PHILIPPS BROS. SUPPLY, INC.

Construction and Industrial Supplies

3159 BAILEY AVE. • BUFFALO, NY 14215 • PHONE (716) 834-8363

